

LDZ-1100 Inline Label Cell with integrated printer



Flexible Marking of PCBs

This label cell is especially characterized by its simple operation and high flexibility.

With the integrated printer the labels are printed just.-in-time with a free selectable layout and then placed onto the PCBs.

Features:

- Stable construction with aluminum profiles, adjustable feet, integrated control cabinet
- Wide maintenance doors with safety lock
- Easy accessibly thermo transfer printer
- Conveyor fix with motor driven stopper (X-axis)
- Pneumatic side clamping
- Electrical width adjustment
- User friendly software package, article management
- Additional industrial PC
- Operation via touch monitor

Optionen:

- Barcode scanner to read 2D data matrix codes
- Smart camera to read data matrix codes and plain text
- Connection with the existing customer data base (i.e. iTAC, MES etc.)
- Special colours according to RAL

Spezifikation	Wert / Beschreibung
Power	230V, 50Hz/3 kVA
Air pressure	6 bar
Dimensions	ca. 1200 x 1200 x1900 mm(LxWxH) plus light tower
Work area	450mm x 450mm
Width adjustment	Elektrical
PCB edge clearance	3mm
Clearance PBC	top: 50 mm, bottom: 40 mm
Transport height	950 +/-25 mm
Colours	Standard RAL 9010-ESD Optional: RAL 9002-ESD RAL 7035-ESD

The complete solution for an automatic label application:

Our label cell combined with auto-apply labels from IDENTCO's provides a simple, steady, precise and cost-effective automatic tracking solution which can easily be integrated into the placement process. We solve your space problem with label sizes already from 3x3 mm!

Die Labels are available in white and green, matte or glossy, and they can be pre-printed in several different colours.

The transparent liner is especially designed for auto-applications.

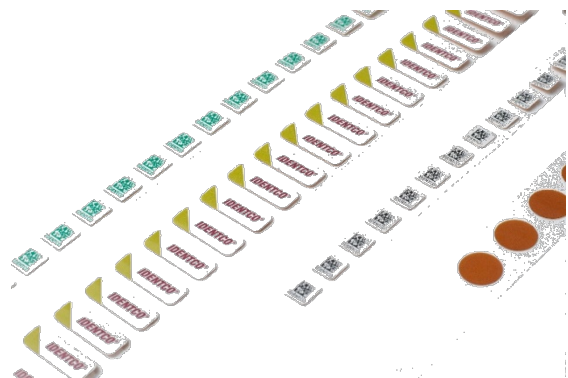
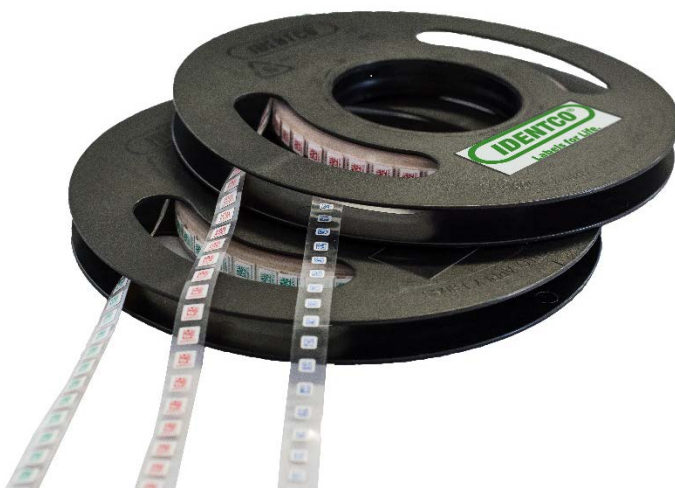
All labels for the Electronic Industry are high temperature labels, they are certified according to UL and CSA and guarantee ROHS conformity.

Furthermore, there are ESD compliant labels available as well as special materials for use with chemicals.

To eliminate damaging static buildup in the production area, IDENTCO utilizes the **REEL-e™**, an anti-static plastic reel.

Standard label sizes available ex works or in short term – pre-printed or blank, i.e.:

Label size / mm	Liner width / mm
3,99 x 3,99	11,43
5,00 x 5,00	11,43
6,35 x 6,35	11,43
6,98 x 6,98	11,43
8,89 x 8,89	12,70
9,53 x 9,53	12,70



Our Product Portfolio



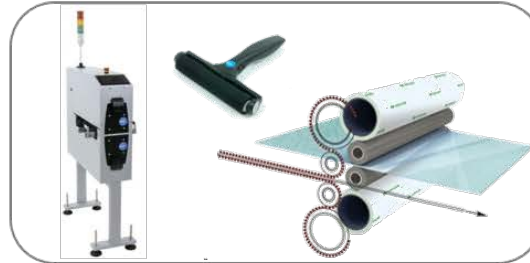
Feeding Technology



Label Feeder, Labels and Marking Solutions



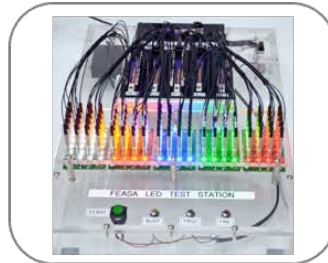
Special Applications



Bare Board Cleaning



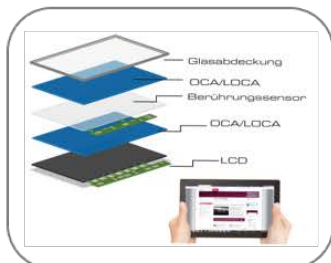
In-System Programming



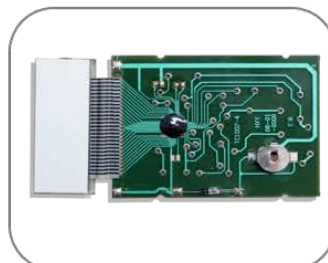
LED Analysis



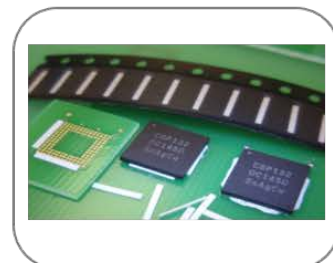
Reflow Inline Camera



Optical Bonding



Thermal Bonding



Place-N-Bond