

Low Space-/ Low-Cost- Inline Label Cell

from 30.000 €



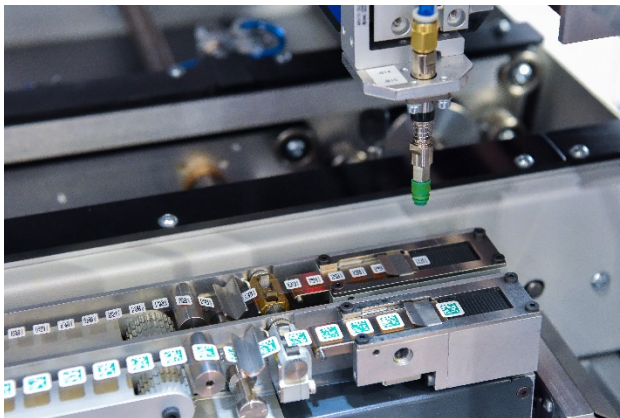
The cost effective and space saving **inline** identification solution

Many companies necessarily need an identification of their products already from the beginning of their production line.

The low-cost label cell from pb tec solutions provides a compact alternative for an affordable price.

It can alternatively be placed before or behind the printer.

The pre-printed labels will be taken out of the integrated label feeder and placed automatically and precisely on the board with the X/Y positioning system.



Specifications	Description
Supply voltage	230V, 50Hz
Air pressure	6 bar compressed air
Outer dimensions	ca. 670 x 1000 x 1800 mm (LxBxH plus signal lamp and monitor)
Travel range	labelling area: 365 x 365 mm
Placement speed	1m/s
Signals	Signal lamp green/red/horn
Programming environment (pickup point & placement point)	Graphical supported PC tool for programming of pickup points and an arbitrary number of placement points
Universal fixture for barcode reader	Adaption to each common barcode reader is possible
Waste box integrated	Waste box underneath the label feeder
Possible PCB sizes	LxW: 80 mm x 70 mm to 450 mm x 365 mm
Operation	PC and monitor with touch panel

The most important advantages:

- Marking before or after the print process
- Naming from the beginning
- Compact design, only 67 cm space requirement
- Label sizes already from 3x3 mm can be used
- The flexible solution for marking of your boards
- Exact, automatic placement of labels
- Can also be used for the application of Die Cut parts

Options:

- Interfaces: SMEMA and Hermes
- Scanner to read the print
- 360° Nozzle for a free programmable 360° rotation of the label in <0,1° steps
- MES connection
- Integration of up to two label feeders as a speed up or an alternative for two different labels

The complete solution for an automatic label application:

Our label cell combined with auto-apply labels from IDENTCO's provides a simple, steady, precise and cost-effective automatic tracking solution which can easily be integrated into the placement process. We solve your space problem with label sizes already from 3x3 mm!

Die Labels are available in white and green, matte or glossy, and they can be pre-printed in several different colours.

The transparent liner is especially designed for auto-applications.

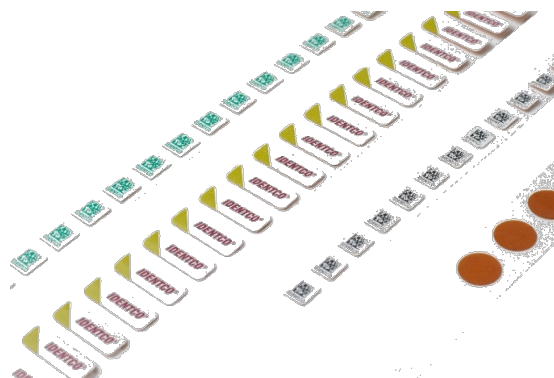
All labels for the Electronic Industry are high temperature labels, they are certified according to UL and CSA and guarantee ROHS conformity.

Furthermore, there are ESD compliant labels available as well as special materials for use with chemicals.

To eliminate damaging static buildup in the production area, IDENTCO utilizes the **REEL-e™**, an anti-static plastic reel.

Standard label sizes available ex works or in short term – pre-printed or blank, i.e.:

Label size / mm	Liner width / mm
3,99 x 3,99	11,43
5,00 x 5,00	11,43
6,35 x 6,35	11,43
6,98 x 6,98	11,43
8,89 x 8,89	12,70
9,53 x 9,53	12,70



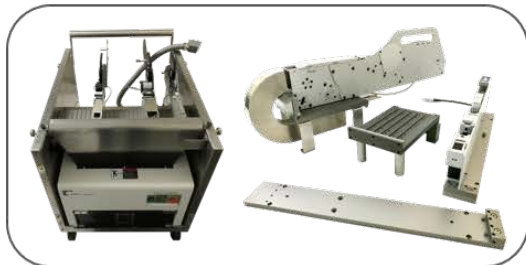
Our Product Portfolio



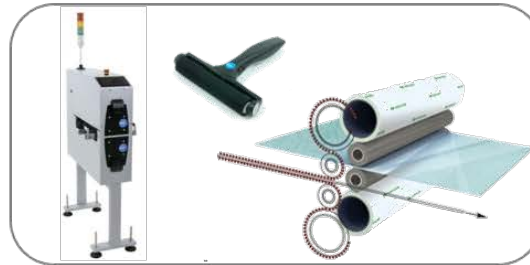
Feeding Technology



Label Feeder, Labels and Marking Solutions



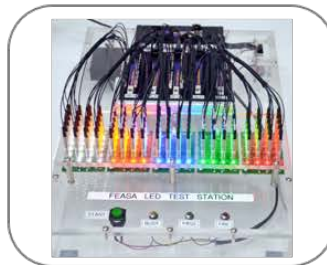
Special Applications



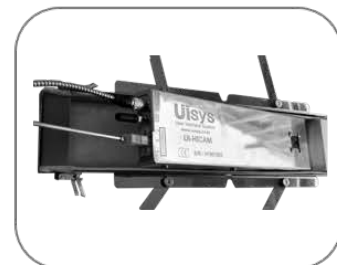
Bare Board Cleaning



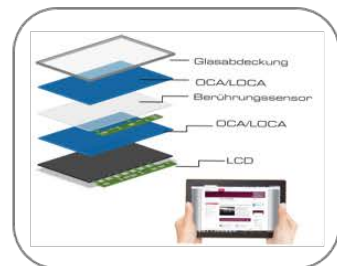
In-System Programming



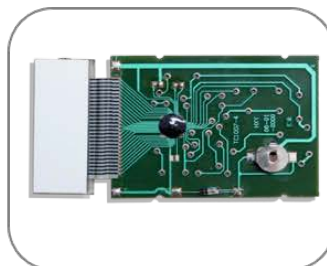
LED Analysis



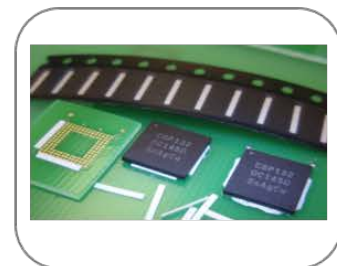
Reflow Inline Camera



Optical Bonding



Thermal Bonding



Place-N-Bond