

Marking Solutions for all applications



Marking – how and wherever you want!

Traceability – a must!

Since several years Traceability is essential in the Electronic Industry. Especially for safety-related products the manufacturers need to trace each component which is included in their final products. This means, that each component like PCB has to get a unique „name“, i.e. in terms of a numbering system.

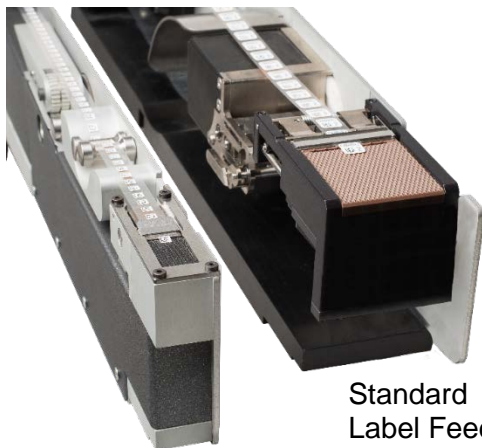
The easiest and cheapest way of marking a product automatically is the application of a label with a label feeder. The feeder can be integrated in the pick and place machine and the label will be simply placed like a standard component – precisely and in line speed.

Slimline Label Feeder – space saving and cost effective

The existing label feeders in the market have a width of about 60 mm and more. If customers have to place big labels, this is still a good solution. But meanwhile the space on the PCB's is extremely limited and most manufacturers are using very small labels, less than 9x9 mm, very often even 4x4 mm or smaller.

In these cases it is waste of space in the feeder bank to use a 60 mm wide label feeder if the job can be done as well with a much smaller feeder.

The new Slimline Label Feeder from pb tec solutions is only 30 mm wide and therefore needs only one slot in the pick and place system. This saves space and thus costs for the manufacturer.



Slimline
Label Feeder
30 mm wide

Standard
Label Feeder
about 60 mm



Now as well for
Mycronic p&p systems

The right label feeder for each label size

The Label Feeders from pb tec solutions are available in two different models – the optimal solution for each label size:

LFS: 30 mm wide for max. liner width of 15 mm

LFM: 46 mm wide for max. liner width of 30 mm

Thus, even the widest label feeder from pb tec is still smaller than other label feeders available in the market. Each pb tec label feeder is only as wide as necessary.

For different label widths there is no adjustment on the feeder needed. The different lengths of the labels can be adjusted electronically.

The empty liner will be collected inside of the feeder and can be taken out of the reservoir at the backside of the feeder – without stopping the placement process.

Only for a change of the label reel the feeder has to be taken out of the pick and place system.

Based on the robust design of the label feeder from pb tec solutions, no wear parts are needed. The warranty time is 24 months for a 24/7 operation.

Not only for labels

Special parts like masking products, pressure sensors, adhesive dots, humidity sensors and many others which are placed on a liner material, can also be fed with this feeder.

Thus, a special part can become a standard part – without use of an expensive special machine.

Several projects with special parts have already been realized, i.e. with humidity sensors, spacers, Kapton dots or other functional parts.

The slimline label feeder can be used for all labels and special parts with a minimum size of 3x3mm and a maximum label length of 25mm. The maximum liner width which can be fed with the LFS is 15 mm.



Feeding of a sensor with 3mm diameter

The complete solution for an automatic marking

Our label feeder combined with auto apply labels from IDENTCO provides a flexible and economic marking solution which can be easily integrated in the pick and place process.

We solve your space problem with labels already from 3x3mm.

The labels are available in white, green, matte or glossy and they can be pre-

printed with different colours.

The transparent liner is especially designed for auto-apply applications, i.e. with label feeders.

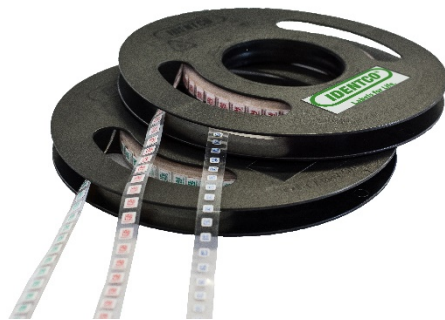
All labels for the electronic production are suitable for high temperatures, UL and CSA certified and as well ROHS conformal.

Furthermore, there are ESD conformal and special chemical resistant labels available. Ebenso stehen ESD-taugliche und

To avoid damages by static charge, our auto apply labels are delivered on anti static plastic reels. These reels can be recycled and are 100% RoHS conformal.

Standard label sizes ex stock or available in short term – pre-printed or blank, i.e.:

| Label size / mm | Liner width / mm |
|-----------------|------------------|
| 3,99 x 3,99 | 11,43 |
| 5,00 x 5,00 | 11,43 |
| 6,35 x 6,35 | 11,43 |
| 6,98 x 6,98 | 11,43 |
| 8,89 x 8,89 | 12,70 |
| 9,53 x 9,53 | 12,70 |

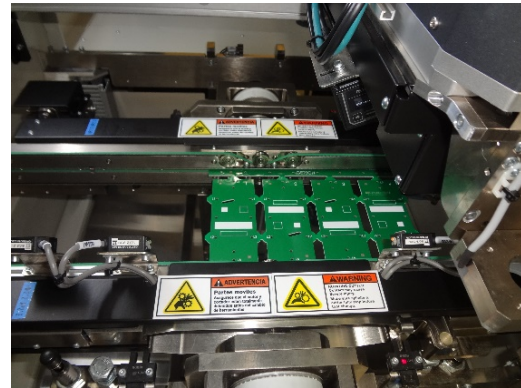


Traceability from the beginning

For applications where marking of the boards in the pick and place system is too late for the traceability, label or laser cells can be used – either inline or as an island solution.

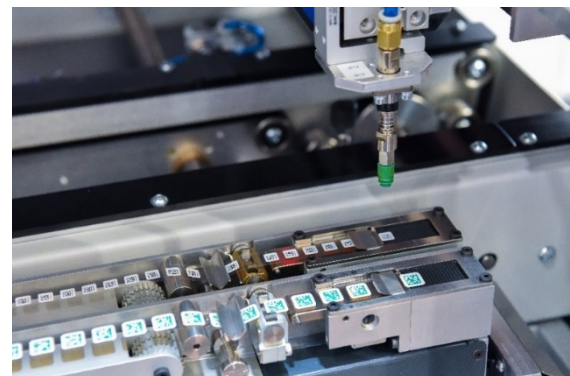
Laser cells mean a relatively high investment and not all materials are suitable for laser marking. In island solutions together with board handling they are furthermore more a solution for bigger companies with several production lines.

Nevertheless, is laser marking a secure and fast way of marking. Our laser cell is equipped with a 30 Watt CO₂ laser source from Keyence and also with an internal flip station for a double sided marking. Based on the high performance, the laser source has a very long life time.



Marking per laser cell with a 30Watt CO₂ laser.

As a cost-effective alternative pb tec solutions provides a Low Cost Label Cell. It's only 67cm wide, can be equipped with two label feeders and costs only around 35.000 €. In some cases, when the label must be placed directly close to a fine pitch component, it can come to smearing of the solder paste (the label has a thickness of around 60 µm!). Then the label cell can be positioned as well behind the printer.



Marking via label cell with two label feeders