

REEL TAPE CUTTER

EU900SA and EU570SA



Funnel optional on request



The clean solution for disposal of your reel tape waste

Selectable Travel Zone

The blade does not need to travel entire length of the cutter. Just select a zone or a combination of zones which are required. For example, a desired cutting travel is in the middle of the cutter, the blade will initially move to the starting point of the travel and start a go-back and forth cutting action within the specified travel zone.

Selectable Cycle Time

Changing cycle time can be achieved by adjusting the blade pause time at the end of travel. This function provides 3 pause times, preset at factory, indicated in the control panel as Short (I) = 2 seconds, Medium (II) = 6 seconds and Long (III) = 10 seconds. Most appropriate time can be set based on waste tape speed, cut length, tape size and its material.

Blade No Lubrication

The new concept of the blades requires no lubrication. The oil replenishment is the thing of the past. This newly designed and specially treated blades run without any lubrication until their functional time is over.

Minimal Maintenance

Elimination of lubrication for the blade and the chain alone simplifies the maintenance significantly. Only a few items have to be checked monthly and adjusted if required

Reliable Timing Belt System

The timing belt system also requires no lubrication at all. No grease, no greasy

chain and no greasy sprockets to deal with, thus expects much cleaner operation. The new timing belt is so reliable that frequency of tension adjustment is less than that of the chain system.

The tension adjustment is very easy. Just remove the back cover and loosen 2 sets of screws to adjust it.

Moreover, thanks to new belt holder system, the belt replacement time is about 5 minutes versus 30 minutes of chain replacement time.

Overload Detection

This function detects and alarms equipment overload during operation in order to prevent damage from the equipment and the motor by buzzing and blinking the lamp. When the primary overload is detected, the equipment moves backward and restarts forward motion. When the secondary overload is detected, the equipment stops and the alarm lamp comes on with a sound of buzzer.

Non-Contact Sensors

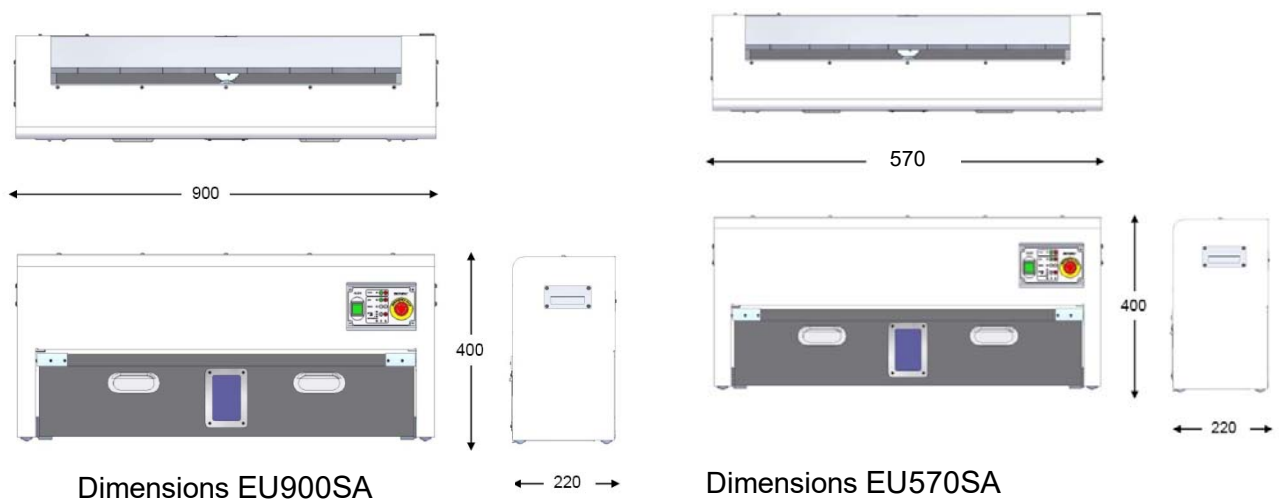
All sensors used in the cutter are non-contact. There are no mechanical limit switches to concern.

ESD Trash Bin

In the SMT operating environment, ESD is a known enemy for its proper operation. For this reason, all cutters are equipped with ESD trash bins to prevent from ESD related troubles.

Specifications

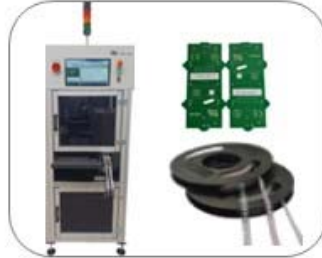
Cutting mechanism	Rotational circular gear blades
Cutting speed	76 mm/sec.
Pause time	2, 6, 10 seconds, preset at factory.
Effective Cutting Length	755 mm – EU900SA 425 mm – EU570SA
External Dimension	900 x 220 x 400 (L x W x H) - EU900SA 570 x 220 x 400 (L x W x H) – EU570SA
Collection Bin	810 x 215 x 172 (L x W x H) – EU900SA 485 x 215 x 175 (L x W x H) – EU570SA
Total Weight	28 kg – EU900SA 21 kg – EU570SA
Noise Level	Lower than 70 dB (new)
Main Power Supply	220 VAC (Single Phase, 50/60 Hz)
Electric Consumption	100 W
Control System Type	MCU (Micro Computer Unit)
Motor Spec.	15W, 220VAC 50/60Hz, Gear Head 1/40



Our Product Portfolio



Label Feeder, also for special parts



Label/ Laser Marker and labels



Tape Feeder und accessories



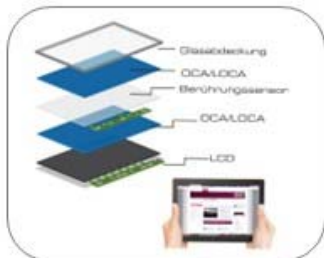
Tray Handler / Reject Parts Conveyor



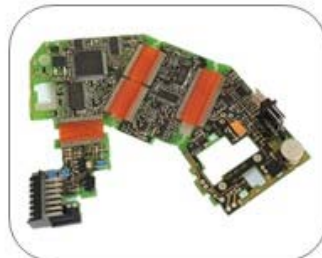
Manual Taping Systems



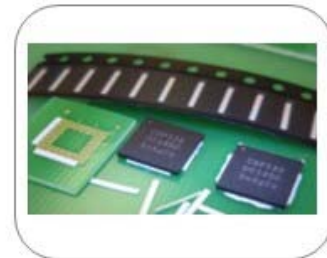
Automatic Packing Systems



Optical Bonding



Thermal Bonding



Place-N-Bond Underfilm



Univers. In-System Programmiers



Reflow Inline Video Camera



Depaneling Systems